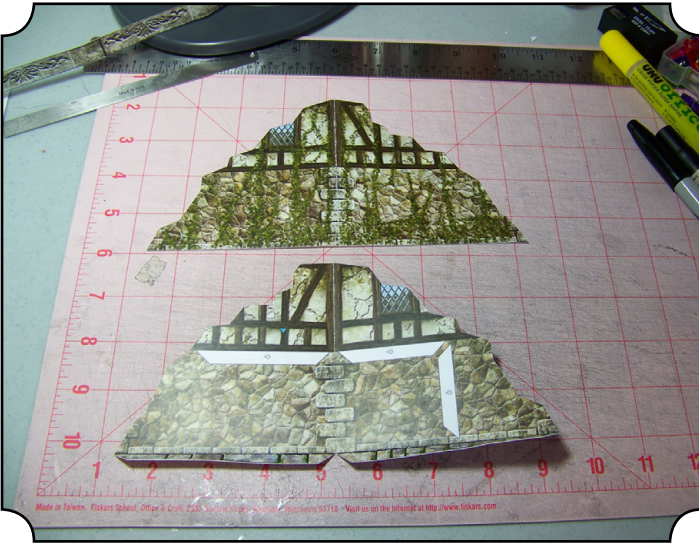


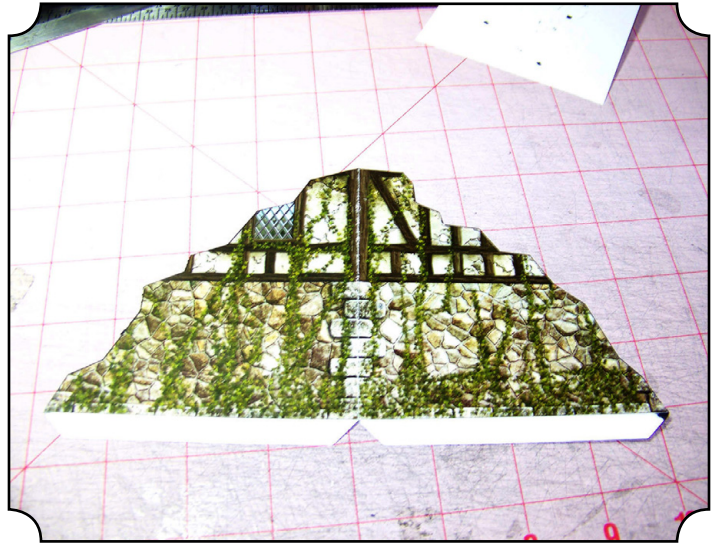
A cartoon-style illustration of a red dragon. The dragon is shown from the side, facing left. It has a long, segmented neck, a small horn on its head, and large, leathery wings. Its body is covered in scales, and it has a long, curled tail. The dragon is standing on four legs.

F A T D R A G O N G A M E S
www.fatdragongames.com

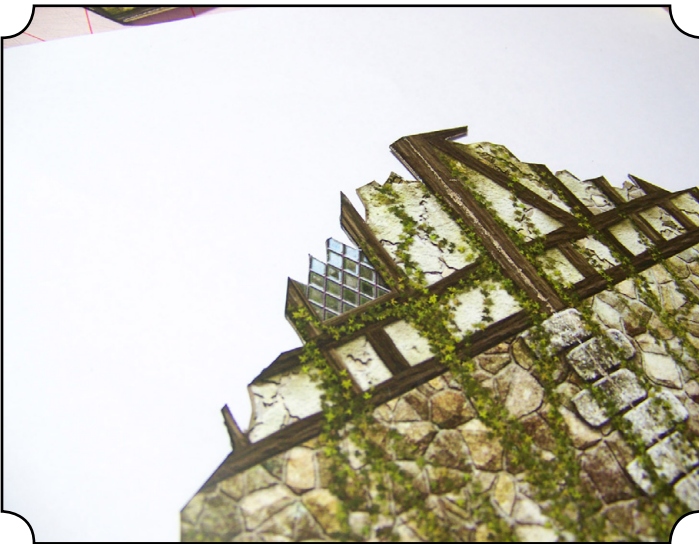
MAIN RUINS



1: Cut and test fold the outer wall piece as shown.



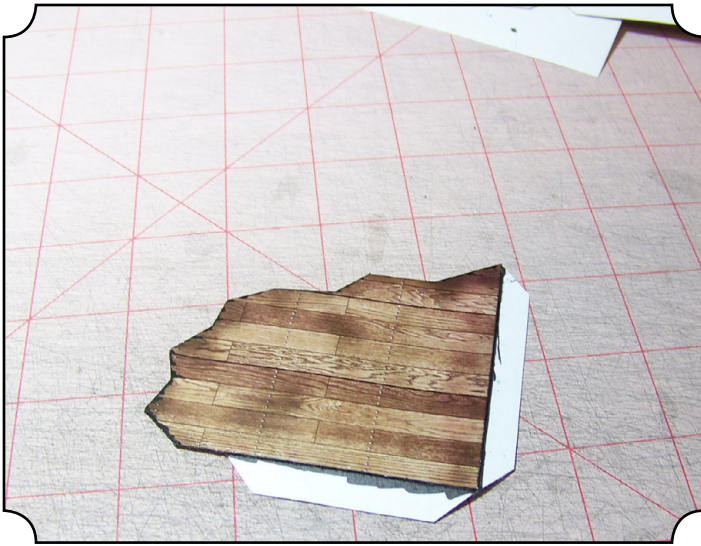
2: Glue the two halves together and allow to fully dry.



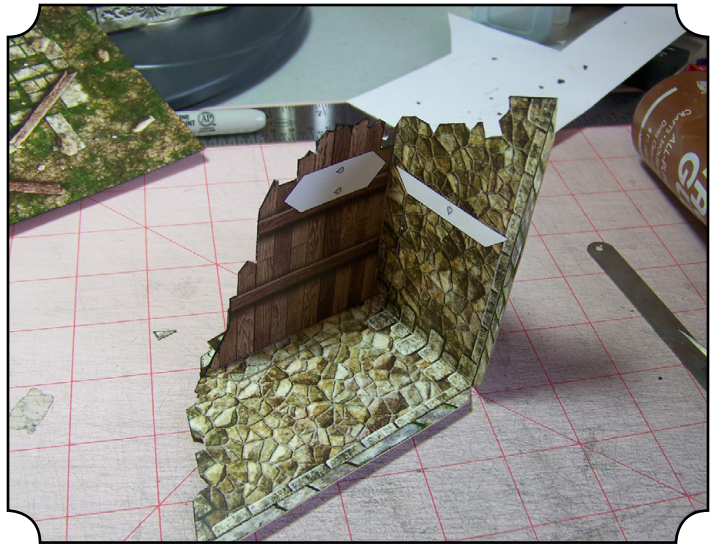
3: If you'd like a more realistic edge on your model, carefully cut away more of the ruined edges as shown, following the various contours and natural breaks.



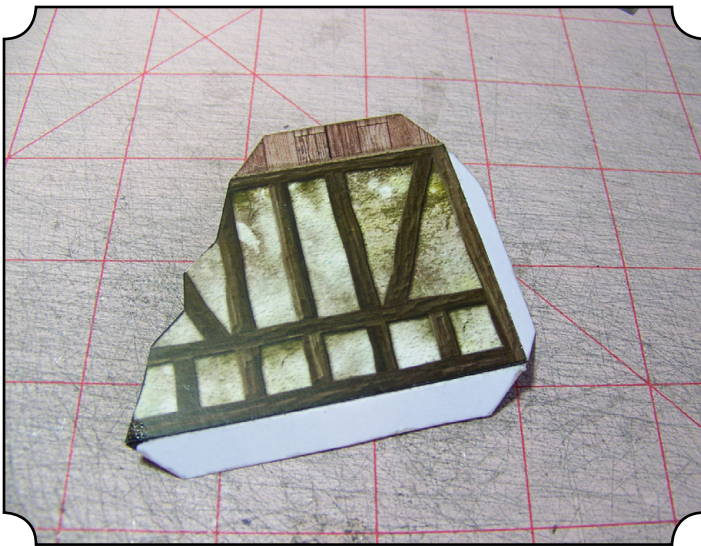
4: Cut and score the floor pieces as shown above.



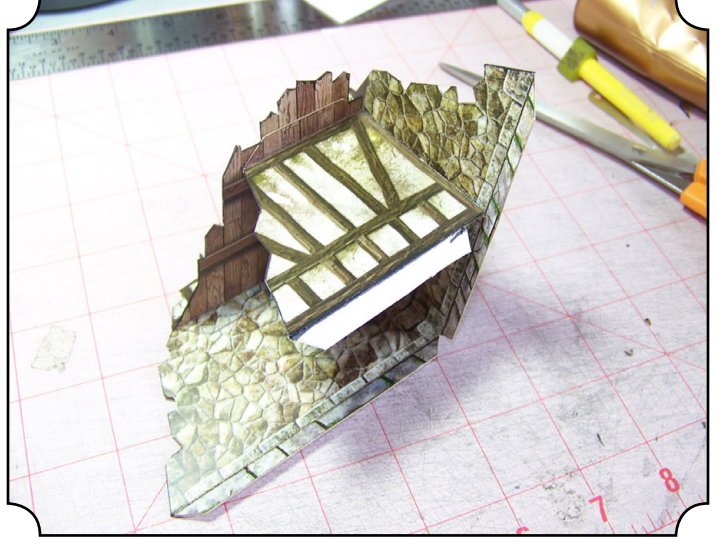
5: Glue the two floor halves together.



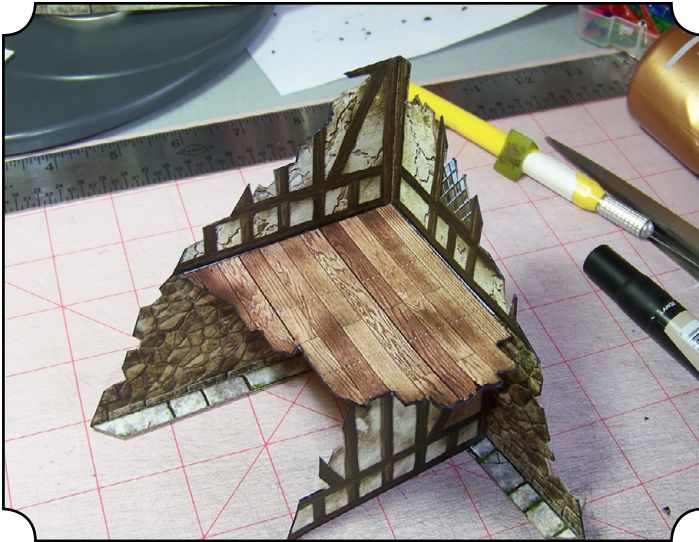
6: Glue the finished floor to the walls as shown above, being careful to keep it level across the horizontal plane.



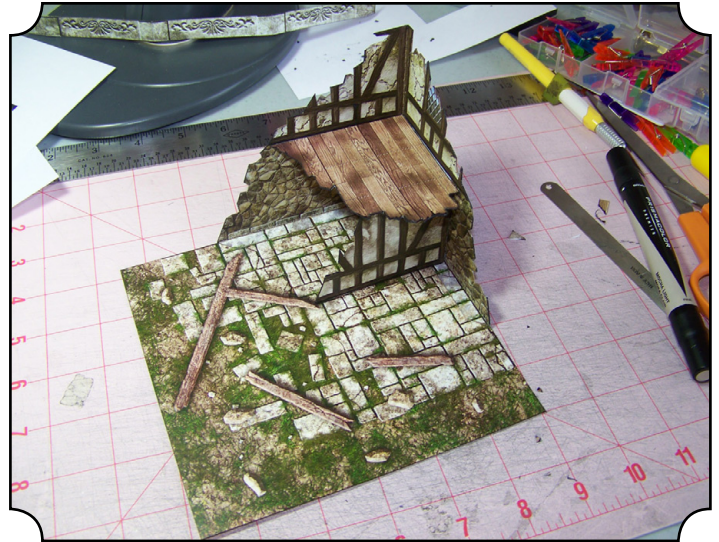
7: Glue the two wall halves together just like the floor pieces in step 5.



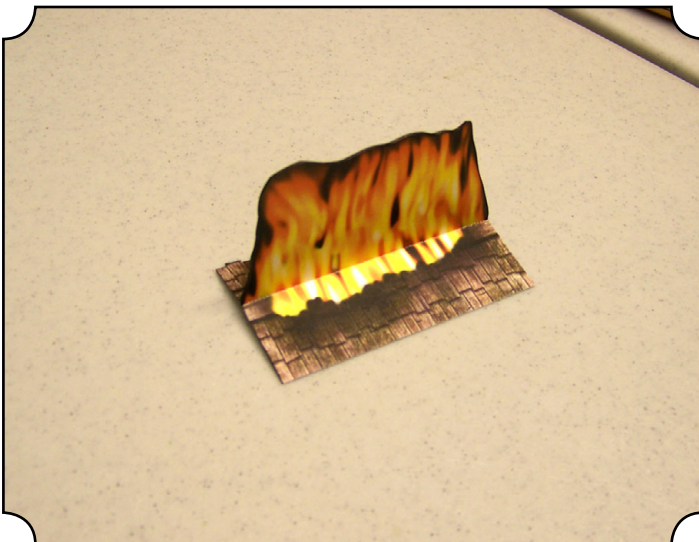
8: Glue the inner wall to the upper floor and outer walls as shown above.



9: This is how the finished building section should appear when finished.



10: Glue the building model to the floor tile as shown above. The ground tiles have multiple options available via the Adobe Acrobat Layers palette that you can select before printing.

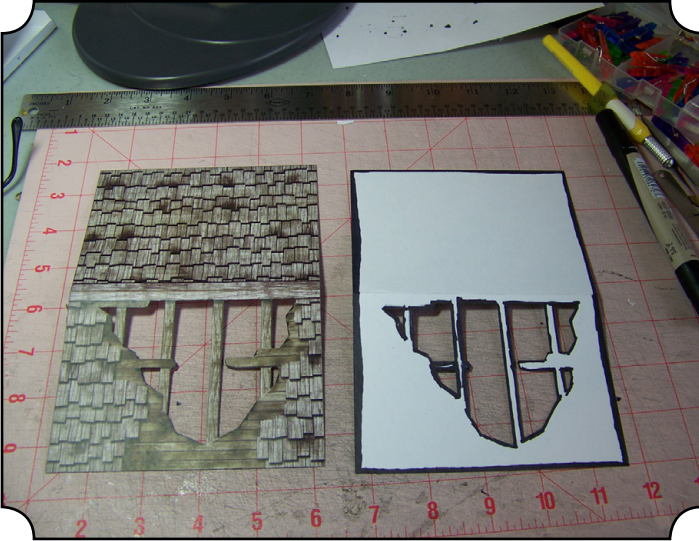


11: The fire sections simple fold and glue in half as shown above. Select the roof type in the Adobe Acrobat Layers palette before printing so the lower tabs match the roof you are using this model with.

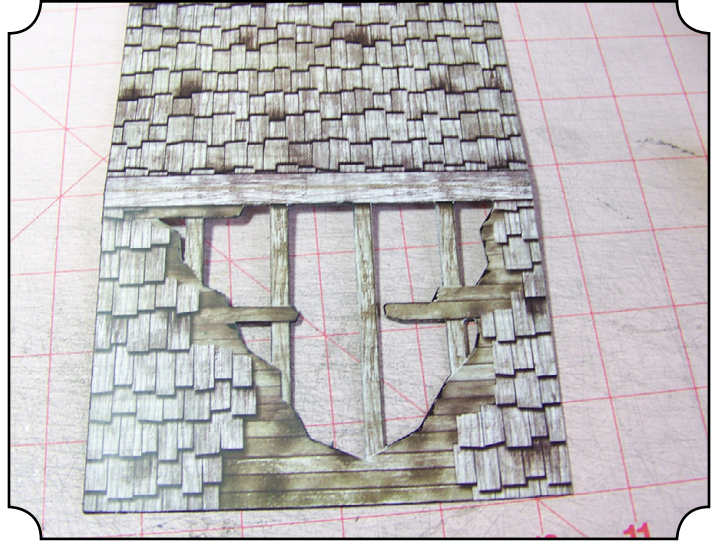


12: You can cut the lower tab edges along the shingle break lines to better hide the edges when applied to the roof.

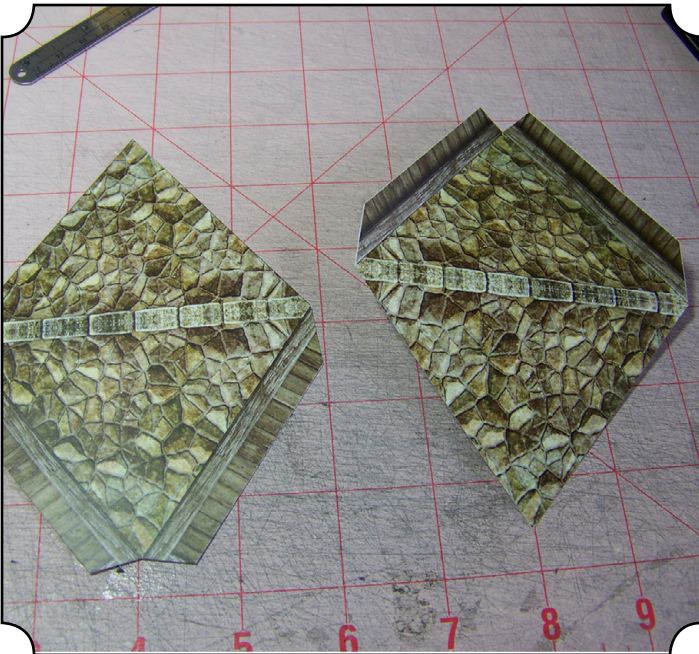
DAMAGED ROOF



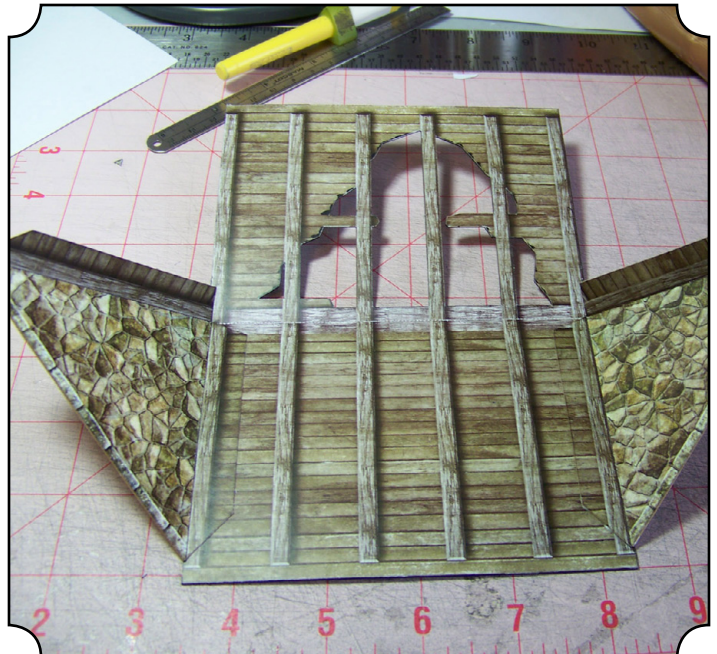
1: The damaged roof will fit any 4x5" building from the Dragonshire Deluxe Edition model set. Choose your side wall style in the Layers palette before printing. Cut and score the two roof pieces as shown above. Edge the back side of each piece with a black marker.



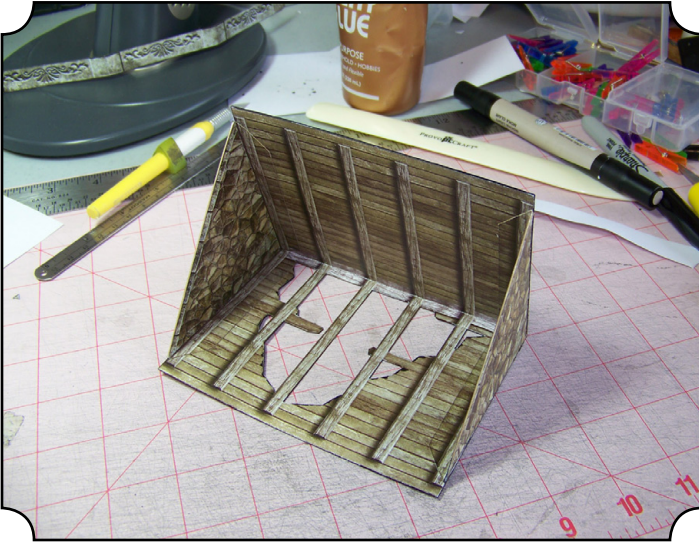
2: Glue the two halves together. You can now do any final trimming of the damaged area.



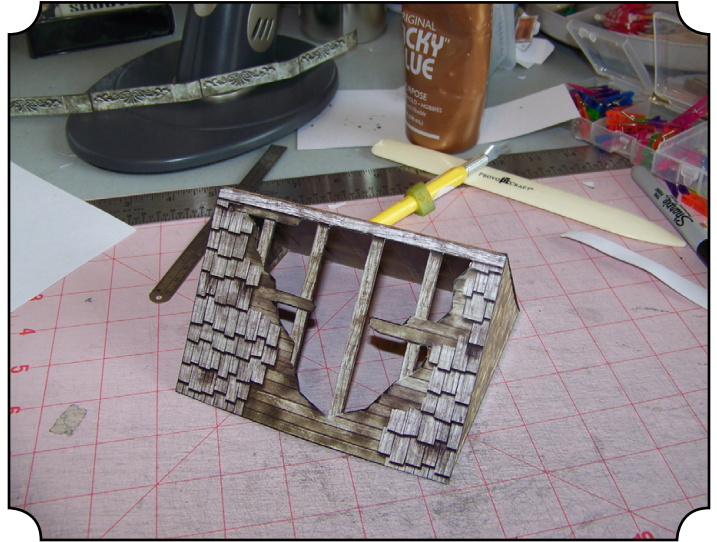
3: Cut, score and test fold the endcap pieces as shown above. Fold the end pieces in half and glue.



4: Glue the completed endcaps to each roof side as shown above. Allow to fully dry before attempting to glue the opposite sides as they will put the tabs you just glued under stress and they may pop up if the glue has not completely set.



5: Finish by gluing the opposite roof side down and allow to dry.



6: Use a black or brown marker to fill in any white edges along seams.